

# Town Gallery





BEFORE



COMMUNITY BUILDING AND ARMORY  
DICKINSON, N. D.  
ENGINEER L.W. VEIGEL 1921-29



COMMUNITY BUILDING AND ARMORY  
DICKINSON, N. D.  
ENGINEER L.W. VEIGEL 1921-29



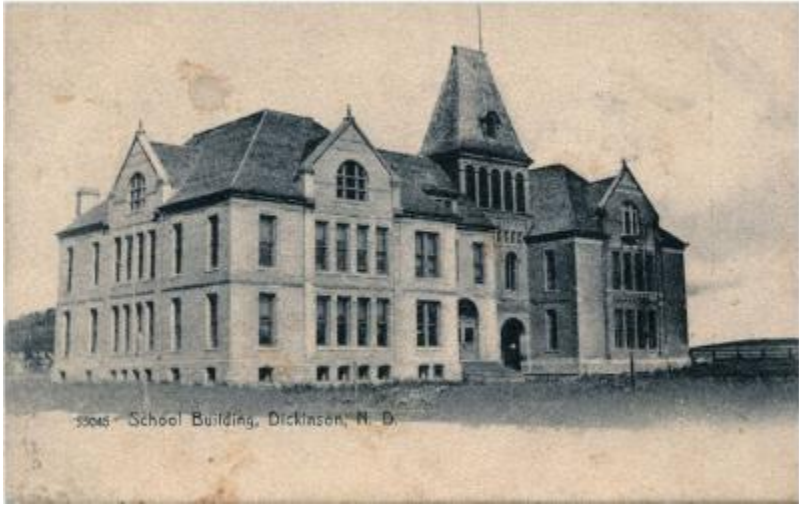
THE PRESS  
DICKINSON, N. D.  
ENGINEER L.W. VEIGEL 1921-29

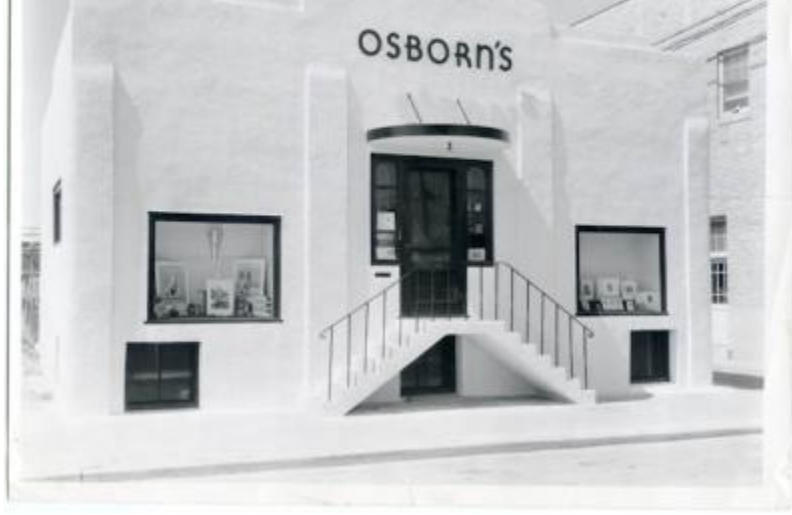
















ST. CHARLES FIRE

2-190





[View Slideshow](#)